

# CPS 10544/1 - Map I

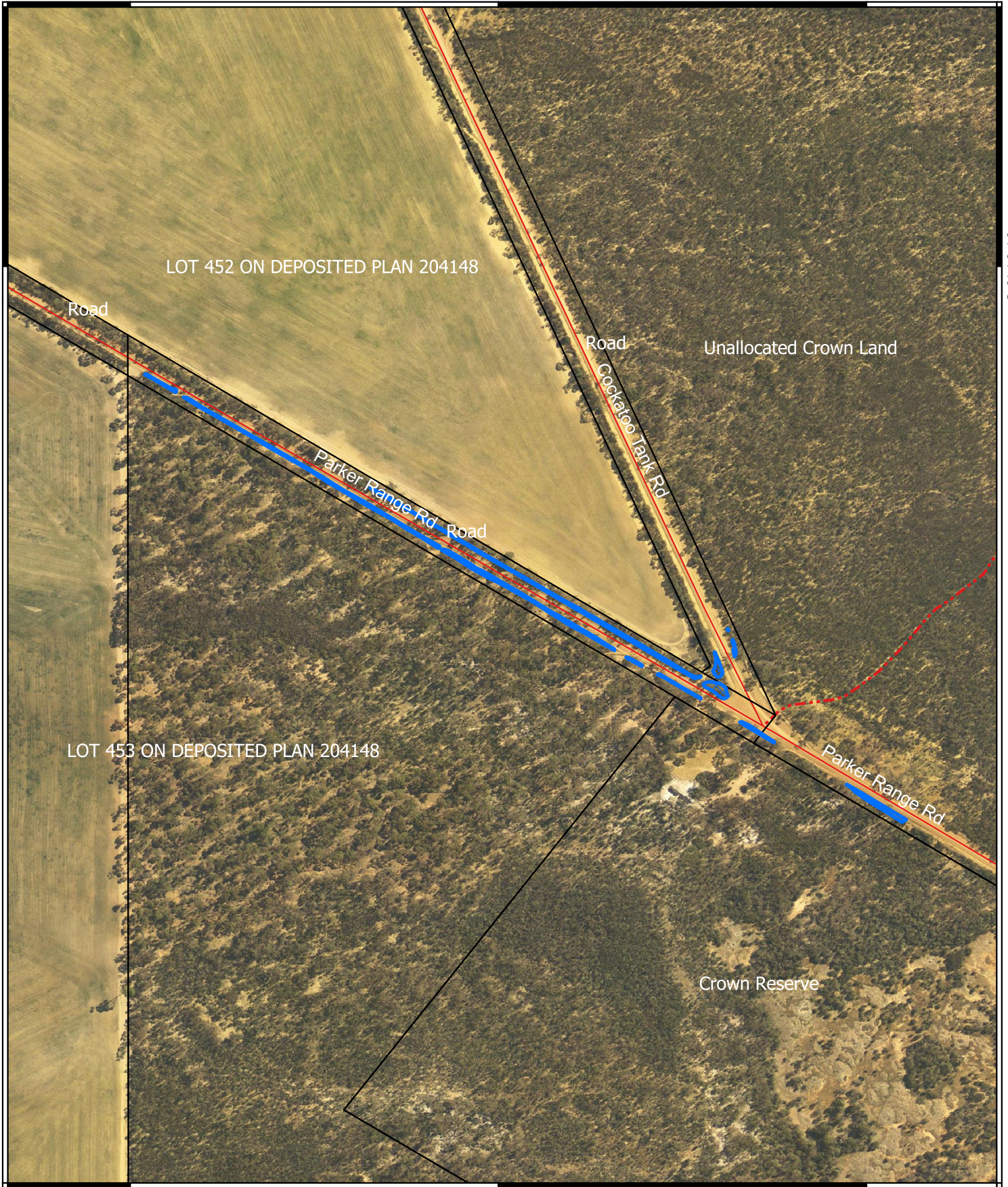
119°29'17"E

119°29'31"E

119°29'46"E

31°34'48"S

31°34'48"S


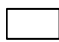



119°29'17"E

119°29'31"E

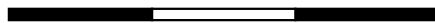
119°29'46"E

## Legend

-  CPS areas applied to clear
-  Land Tenure (LGATE\_226) - SLIP
-  Local Government Authorities



0 100 200 300 m



1:4,000

Projection: GDA2020



GOVERNMENT OF  
WESTERN AUSTRALIA